

# DON'T MOVE FIREWOOD



## » Buy it local

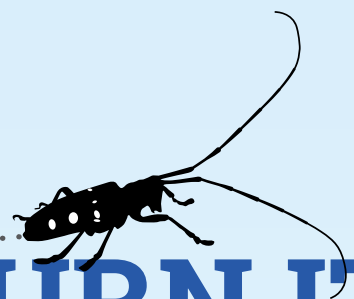
Buy firewood at or near your destination to ensure that you are not introducing invasive pests or diseases.

## » Burn it local

If you accidentally brought any non-local firewood with you, use it first and burn it completely. It's always safest to burn local firewood only!

## » Leave it local

If you have firewood left over from your stay, leave it behind for the next visitor. Avoid transporting firewood long distances.



## BUY IT WHERE YOU BURN IT

Moving firewood, to or from a campground or cabin, can spread **invasive species** and **diseases**. If this happens, our forests can be severely impacted, affecting our air and water quality, as well as our economy.

**Help Protect Our Forests**

